



Automation Xpress™

Take your programming to the next level

— Automation Xpress, an easy to use, application development tool for use with Giga-tronics 2400 Series Microwave Synthesizers and Automation Xpress Interface. Automation Xpress offers fast remote operation that goes beyond just fast frequency switching.

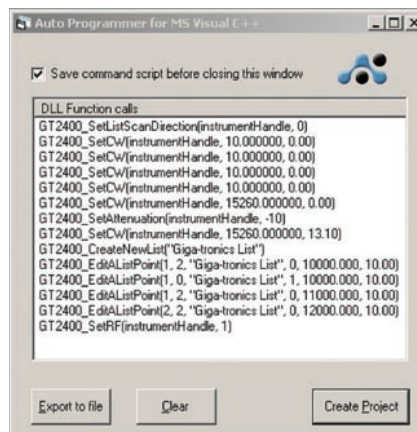
Automation Xpress Features

- Access to fast < 2 ms typical CW Frequency/Power Switching via the 2400 Series Automation Xpress Interface (AXI)
- Download 4,000 point lists in a matter of seconds with simplified list development windows.
- Xpress Auto-Programmer for Visual Basic
- Xpress Auto-Programmer for Visual C++
- File access for fast list creation and fast list download speeds
- Code Generation at the click of the mouse
- Eliminate coding errors with accurate code generation tools

Xpress Auto-programmer Visual Basic & Visual C++

The innovative Auto-Programmer tackles the major problems facing test programmers today. Xpress Auto-Programming eliminates the complexity of having to write specific code sequences needed to control the operation of the instrument.

Automation Xpress eliminates the need for you to learn the various GPIB commands. With a click of the mouse, the Auto-Programmer feature automatically records your actions and translates them into code. Auto-programming provides the option of seamlessly converting the recorded action sequence into a generated program(s), that can be imported into to the program environment of your choice, such as Visual C++ and Visual Basic. Auto-programming generates the same results as the action sequence created manually. The value is a reduction in test downtime, reduced programming costs, and greater profitability.



Automation Xpress Interface

The key to reducing the cost of testing is faster frequency switching. The 2400 Series Microwave Synthesizer offers unmatched frequency and power switching in list mode, however this approach may not be suitable in many remote programming situations. Automation Xpress offers fast remote operation that goes beyond just fast frequency switching. Automation Xpress combined with the Automation Xpress Interface option ensures unmatched **2.5 ms CW frequency and power switching** performance, providing fast and flexible data exchange rates for faster testing and more device throughput.

Automation Xpress Values

- Faster CW switching and list download enables faster testing and more device throughput
- Higher throughput
- Increased profitability
- Reduced cost of test- increased return on investment
- Reduce programming training
- Streamlines the programming environment by ensuring consistent development
- Increase testing confidence
- Quality and rapid development

reduce programming costs

The AXI ensures fast remote programming using Automation Xpress from any ATE/TPS program to a 2400 series instrument, providing faster CW frequency switching time, faster overall download, and faster function execution times of large amounts of data.

The transit and execution times for single function calls, such as changing CW frequency are **10 X faster** than sending the command via SCPI or Native. With Automation Xpress now sending large amounts of data, such as large lists, the transit and execution times are **> 100X faster** as compared to SCPI. This makes lengthy and repetitive tasks faster and more efficient, maximizing test throughput, while minimizing testing time and system downtime.

Automation Xpress provides the tools necessary to successfully program the 2400 series. The Xpress Auto-programmer can virtually eliminate the need for training, providing programming scripts and sequences that are guaranteed for accuracy.

ensure consistent future programming

Programmers come and go, AX streamlines program development by ensuring uniform and accurate code generation. Click of the mouse code generation eliminates the chances for coding errors, resulting in increased testing confidence.

quality support

1 year quality support included. Remote function calls and programming assistance is provided with the Automation Xpress development tools. In addition to a detailed description of the Xpress Interface function calls, programming examples are also provided.

system requirements



- Intel-compatible computer Pentium 90 or higher
- 32 MB RAM, CD ROM and hard disk drive

Giga-tronics

4650 Norris Canyon Road
San Ramon, CA 94583-1320
Tel. 925.328.4650
Fax. 925.328.4700