

# GPIB Analyzer for PCI

## NI PCI-GPIB+

### Analyzer Hardware

- Monitor and control all GPIB lines
- Capture GPIB events, including event timestamping
- Large FIFO for high-speed captures
- Hardware triggering
- Variable handshake rate, including HS488
- Capture GPIB handshake line transitions

### Analyzer Software

- Easy-to-use graphical application
- Selective GPIB event capture
- Several windows for capture buffer and capture display
- Several data display formats
- Capture buffer size limited only by system memory

- Captured data searchable for specified GPIB pattern
- Capture event markers for easy analysis and benchmarking
- Selective captured event printing
- Software can run concurrently with GPIB applications

### Controller

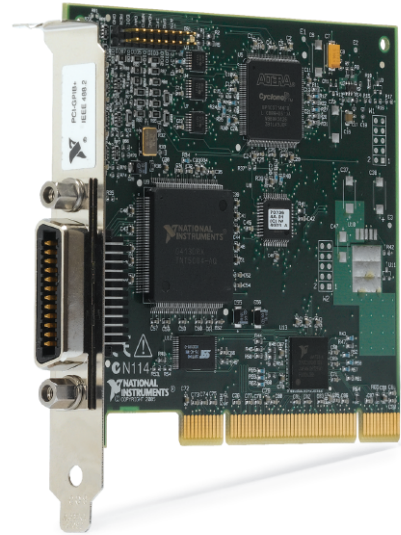
- IEEE 488.2 and HS488 compatible
- Jumperless, software configurable
- Plug-and-play compatibility

### Operating Systems

- Windows 2000/XP

### Driver Software (included)

- NI-488.2
- GPIB analyzer



## Overview

The National Instruments PCI-GPIB+ device includes a complete GPIB analyzer and GPIB controller on a single device. It is an HS488-compatible, lower-cost alternative to purchasing two separate products for analyzer and controller functionality. You can use the PCI-GPIB+ to troubleshoot IEEE 488 software and hardware problems or control GPIB instruments. You can trigger on bus patterns or specific GPIB events and benchmark system performance with the built-in timestamping capabilities.

## Monitoring the Bus

The GPIB analyzer software displays the current state of the GPIB at all times. The Bus Monitor window displays the real-time state of each of the 16 GPIB data and control lines. It displays the state of the eight data lines in ASCII, hexadecimal, and binary formats, and the state of the eight control lines in binary format.

The window displays the binary format as a series of LEDs, one for each GPIB line represented.

Each GPIB data and control line has a corresponding toggle switch you can use to assert one or more of these lines at any time. Using these switches, you can exercise simple control over the GPIB, such as stepping through the states of the source or acceptor handshake. The Accept Byte button performs a single acceptor handshake sequence. The GPIB analyzer software offers several options for capturing and analyzing activity on the GPIB. You enable the capture by using the Capture button in the Action window. When the analyzer is capturing, it continually samples the GPIB and records the occurrence of user-specified GPIB

events. The only limit to the number of capture samples you can record is the memory available on your computer. You can configure the analyzer application to record captured information for any combination of the following GPIB events:

- Data transfers
- Control-line transition
- Parallel-poll response
- Command transfers
- Handshake-line transition

In addition, you can configure the analyzer application to continually reuse the capture buffer (treat it as a circular buffer) until you stop the capture operation. Again, the only limit to the capture buffer size is the memory available on your computer.

You can configure the analyzer application to participate in the IEEE 488.1 3-wire handshake while capturing. For nonintrusive captures, you can configure the analyzer application not to participate in the IEEE 488.1 3-wire handshake while capturing. Besides capturing the standard IEEE 488.1 3-wire handshake, the analyzer application can also capture high-speed HS488 data transfers. If desired, you can configure the analyzer application to record timestamps with each captured event. Recorded timestamps are relative to the previously recorded timestamp and have a 50 ns resolution.

Sometimes, you may want to focus a capture operation on the occurrence of a specific GPIB pattern that occurs at some unknown time. With the analyzer application, you can define a GPIB trigger condition and specify the number of events to record before and after the specified GPIB trigger condition. You start a triggering capture using the Capture & Trigger button in the Action window.

## Analyzing Captured Data

The GPIB analyzer software has a complete set of tools for viewing and interpreting captured GPIB information. Using the Capture Display window, you can monitor an in-progress capture operation or view the captured information after capture stops. Additionally, you can load and view previously saved capture information for further review and analysis. The Capture Display window shows captured information in ASCII, hexadecimal, and binary format, and, if you specify, timestamps for each captured item. High-level interpretation of the data and control lines, including detailed addressing information, is also available in the form of standard IEEE 488 mnemonics. You can quickly scan through the captured information using scrolling and paging operations.

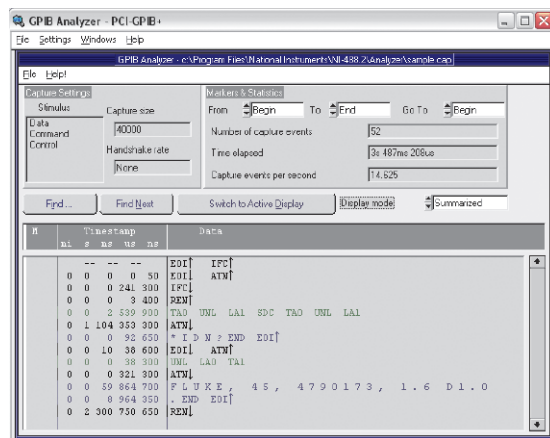


Figure 1. Easy Application Troubleshooting

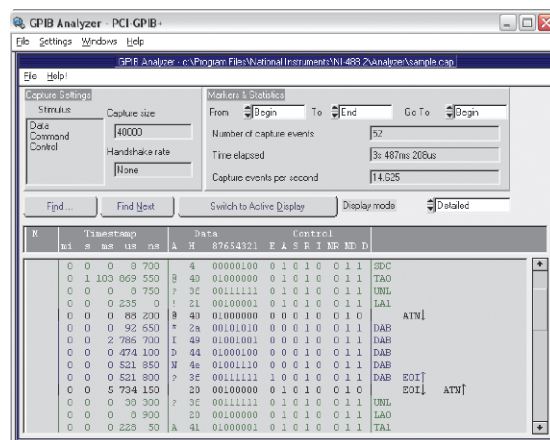


Figure 2. Real-Time Monitoring or Captured Data Analysis of the 16 GPIB Data and Control Lines

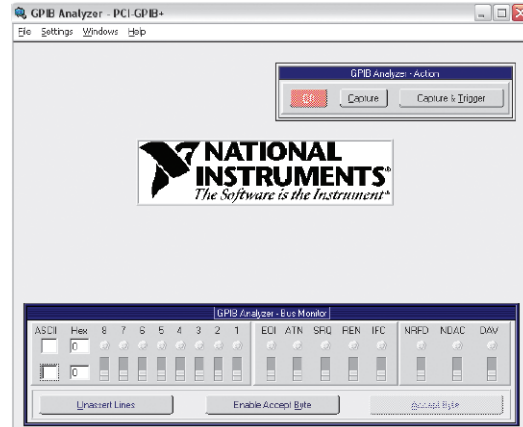


Figure 3. Bus Monitor Window

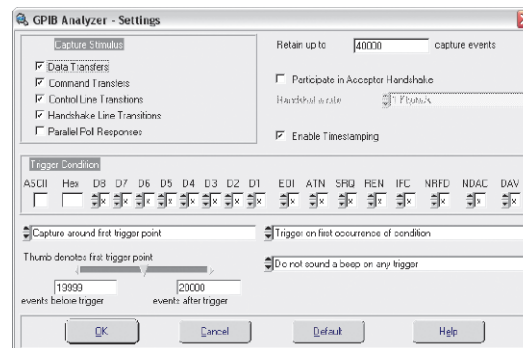


Figure 4. GPIB Analyzer Settings Window

Because you can have several Capture Display windows open, you can simultaneously view current GPIB activity in one window and view previously captured GPIB events in another window. Each Capture Display window presents the captured data in one of two formats – detailed or summarized. The detailed format shows each command message and data byte on a single line, with ASCII, hexadecimal, and binary equivalents. Using the summarized format, you can see entire GPIB messages on the same line. Postcapture analysis features include markers for highlighting and examining specific GPIB events in the captured data – you can use these markers to determine elapsed time between captured events and the number of events per second:

- Flexible pattern-search utility for quickly locating specific GPIB patterns
- Saving of captured data for later review
- Printing of captured data to a file or printer in either detailed or summarized formats



# NI Services and Support



NI has the services and support to meet your needs around the globe and through the application life cycle – from planning and development through deployment and ongoing maintenance. We offer services and service levels to meet customer requirements in research, design, validation, and manufacturing. Visit [ni.com/services](http://ni.com/services).

## Training and Certification

NI training is the fastest, most certain route to productivity with our products. NI training can shorten your learning curve, save development time, and reduce maintenance costs over the application life cycle. We schedule instructor-led courses in cities worldwide, or we can hold a course at your facility. We also offer a professional certification program that identifies individuals who have high levels of skill and knowledge on using NI products. Visit [ni.com/training](http://ni.com/training).

## Professional Services

Our Professional Services Team is comprised of NI applications engineers, NI Consulting Services, and a worldwide National Instruments Alliance Partner program of more than 600 independent consultants and

integrators. Services range from start-up assistance to turnkey system integration.

Visit [ni.com/alliance](http://ni.com/alliance).



## OEM Support

We offer design-in consulting and product integration assistance if you want to use our products for OEM applications. For information about special pricing and services for OEM customers, visit [ni.com/oem](http://ni.com/oem).

## Local Sales and Technical Support

In offices worldwide, our staff is local to the country, giving you access to engineers who speak your language. NI delivers industry-leading technical support through online knowledge bases, our applications engineers, and access to 14,000 measurement and automation professionals within NI Developer Exchange forums. Find immediate answers to your questions at [ni.com/support](http://ni.com/support).

We also offer service programs that provide automatic upgrades to your application development environment and higher levels of technical support. Visit [ni.com/ssp](http://ni.com/ssp).

## Hardware Services

### NI Factory Installation Services

NI Factory Installation Services (FIS) is the fastest and easiest way to use your PXI or PXI/SCXI combination systems right out of the box. Trained NI technicians install the software and hardware and configure the system to your specifications. NI extends the standard warranty by one year on hardware components (controllers, chassis, modules) purchased with FIS. To use FIS, simply configure your system online with [ni.com/pxiadvisor](http://ni.com/pxiadvisor).

### Calibration Services

NI recognizes the need to maintain properly calibrated devices for high-accuracy measurements. We provide manual calibration procedures, services to recalibrate your products, and automated calibration software specifically designed for use by metrology laboratories. Visit [ni.com/calibration](http://ni.com/calibration).

### Repair and Extended Warranty

NI provides complete repair services for our products. Express repair and advance replacement services are also available. We offer extended warranties to help you meet project life-cycle requirements. Visit [ni.com/services](http://ni.com/services).



[ni.com](http://ni.com) • (800) 813 3693

National Instruments • [info@ni.com](mailto:info@ni.com)

